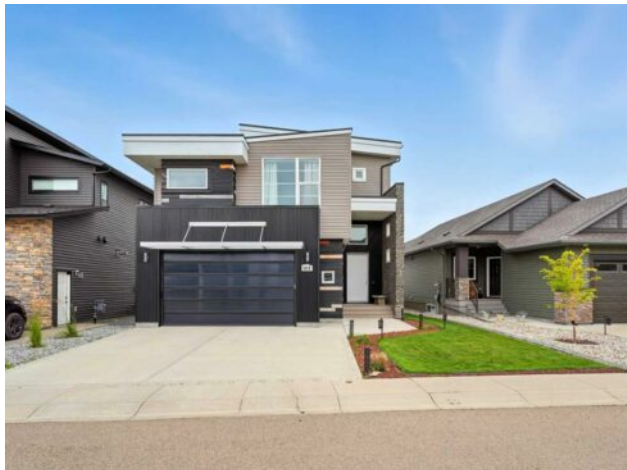


102 Longmire Close
Red Deer, Alberta

MLS # A2245919



\$769,900

| | | | |
|------------------|---|---------------|------------------|
| Division: | Laredo | | |
| Type: | Residential/House | | |
| Style: | 3 Level Split | | |
| Size: | 2,407 sq.ft. | Age: | 2017 (8 yrs old) |
| Beds: | 4 | Baths: | 3 full / 1 half |
| Garage: | Double Garage Attached | | |
| Lot Size: | 0.10 Acre | | |
| Lot Feat: | Back Lane, Back Yard, City Lot, Front Yard, Landscaped, Lawn, Level | | |

| | | | |
|--------------------|--|-------------------|-----|
| Heating: | High Efficiency, In Floor, Forced Air, Natural Gas | Water: | - |
| Floors: | Carpet, Laminate, Tile | Sewer: | - |
| Roof: | Metal | Condo Fee: | - |
| Basement: | Finished, Full | LLD: | - |
| Exterior: | Brick, Metal Siding , Vinyl Siding, Wood Siding | Zoning: | R-L |
| Foundation: | Poured Concrete | Utilities: | - |
| Features: | Bar, Beamed Ceilings, Central Vacuum, Double Vanity, High Ceilings, Kitchen Island, No Smoking Home, Quartz Counters, Soaking Tub, Wired for Sound | | |
| Inclusions: | N/A | | |

Welcome to this stunning architectural gem, where modern design meets comfort and luxury! This one-of-a-kind home features 4 spacious bedrooms PLUS OFFICE and 3.5 baths, making it perfect for families or those who love to entertain. Inside you are greeted by vaulted ceilings that enhance the open-concept living space. The floor-to-ceiling custom metal gas fireplace is a true showstopper in the living room, adding warmth and contemporary flair. The chef's kitchen comes complete with a gas stove, sleek range hood, quartz, and counter-to-ceiling luxury tile. An abundance of cabinetry ensures you'll never run out of storage space. Retreat upstairs to the luxurious master suite, boasting a spa-like ensuite with premium finishes, or to the fully finished basement including a wet bar, spare room, and large storage spaces. This home is on a family friendly close in sought after south Red Deer. Close to great schools, shopping, and parks/walking trails! ADDITIONAL HIGH END FEATURES INCLUDE: Reverse osmosis, In-floor heating, Air conditioning and Water softener!