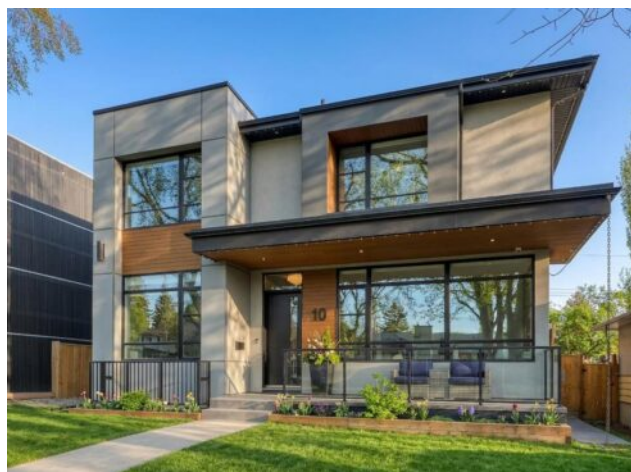


10 Lissington Drive SW  
Calgary, Alberta

MLS # A2316876



## \$2,299,900

<b>Division:</b>	North Glenmore Park		
<b>Type:</b>	Residential/House		
<b>Style:</b>	2 Storey		
<b>Size:</b>	3,419 sq.ft.	<b>Age:</b>	2018 (8 yrs old)
<b>Beds:</b>	6	<b>Baths:</b>	4 full / 1 half
<b>Garage:</b>	Double Garage Detached, Oversized		
<b>Lot Size:</b>	0.14 Acre		
<b>Lot Feat:</b>	Back Lane, City Lot, Lawn, Low Maintenance Landscape, Rectangular Lot, St		

<b>Heating:</b>	Forced Air, Natural Gas	<b>Water:</b>	-
<b>Floors:</b>	Carpet, Hardwood, Tile	<b>Sewer:</b>	-
<b>Roof:</b>	Asphalt Shingle	<b>Condo Fee:</b>	-
<b>Basement:</b>	Full	<b>LLD:</b>	-
<b>Exterior:</b>	Stucco, Wood Frame	<b>Zoning:</b>	R-CG
<b>Foundation:</b>	Poured Concrete	<b>Utilities:</b>	-

**Features:** Bar, Built-in Features, Central Vacuum, Double Vanity, High Ceilings, Kitchen Island, No Smoking Home, Open Floorplan, Recessed Lighting, Skylight(s), Soaking Tub, Walk-In Closet(s), Wet Bar, Wired for Sound

**Inclusions:** Outdoor Ceiling Speakers, Interior Ceiling Speakers, Wired Security System, Exterior Cameras (3), Ring Doorbell & Sensors (3), Beverage Fridge, Projector & Screen, Vacuflow, TV Mounts (5), Outdoor Built-in BBQ, Built-in Patio Heater, Electric Garage Heater, WATTS Exterior LED Lights, Irrigation

Experience elevated living in this exceptional custom luxury home in North Glenmore Park, built by award-winning William Blake Homes, offering over 3,400 sq ft, 6 beds, and 4.5 baths. Designed with a seamless blend of modern architecture, high-end finishes, and everyday functionality. As you enter, you're greeted by a spacious foyer that flows effortlessly into a stunning open-concept main floor, defined by soaring ceilings, expansive windows, and abundant natural light. At the heart of the home is a chef-inspired kitchen featuring custom cabinetry, premium Jenn-Air appliances, quartz countertops, and an oversized island—perfect for both everyday living and sophisticated entertaining. The adjoining dining area and elegant living room, anchored by a sleek linear fireplace, create a warm yet refined atmosphere. Designed for today's lifestyle, the main floor also offers a glass-enclosed office and an additional private den with built-in millwork, giving you a dedicated space to work or play room that doesn't take up the whole house. A well-appointed mudroom with 5 custom lockers provides exceptional storage and direct access to the heated oversized double garage. Upstairs, the primary suite is an absolute dream. The walk-in closet is spacious, and the ensuite feels like a spa, with dual showerheads (including a rain shower and spray nozzle), a steam shower, and in-floor heating. It's pure luxury. The other THREE beds are generously sized, with one enjoying a private 3-pc ensuite and the other two sharing a lovely 5-pc Jack-and-Jill ensuite with a skylight. The fully developed lower level is designed for entertainment & wellness. The media room is set up for movie nights or big game days with a 120" projector screen and built-in surround sound for an immersive experience. There's also a gym OR 6th bed, a games area with pool table, a wet bar,

in floor heating, and the integrated whole-home audio enhances both indoor and outdoor experiences. Step outside to your private outdoor oasis, complete with a covered deck with built-in heater, outdoor speakers, built-in BBQ station, irrigation system, and ambient gemstone lighting—perfect for year-round entertaining. The oversized double garage (27 Wx 23 D) with a heater provides more than enough space for your cars, plus extra storage. The home also has all the smart tech you could want plus multi-zone air conditioning, a VacuFlow system on all three floors, and motion-sensor lighting. Ideally located just minutes from the vibrant shops and dining of Marda Loop, Glenmore Reservoir's scenic walking & cycling paths, top-rated schools including Altadore School (K-6), private specialized learning at Rundle Academy and Master's Academy & College, along with nearby options like Lycée international de Calgary and Central Memorial. This home offers the perfect balance of luxury, lifestyle, and location. A rare opportunity to own a turnkey luxury residence in North Glenmore Park—where sophisticated design meets everyday living.